



**KERCHAN**  
Professional Innovation

# Product Specification

Product No:                     KERSAD2023001                    

Product model:                     SAD2901KL                    

File No:                     KER2023001                    

Version No:                     V1.0                    

Date:                     2023-05-01

# Index

---

<b>01</b>	● Product Features .....	2
<b>02</b>	● Application .....	2
<b>03</b>	● Specification .....	3-4
<b>04</b>	● Instructions and After-Sales Service .....	4

## Product Features

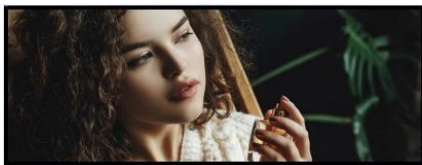
1. Boot or shutdown per designed schedule
2. Full High Definition (HD) resolution
3. Wireless connectivity options through WiFi or 4G
4. Content Management System (CMS) for real-time updates
5. 89/89/89/89 degree full viewing angle
6. Support for 1920\*632 pixel video resolution
7. Pre-installed third-party applications for added convenience
8. Customizable solutions to meet specific needs
9. Enclosed design for easy embed to pop display
10. Integrated Android 11.0 rooted solution for seamless performance
11. Certified with CE, FCC, and ROHS standards for quality assurance

## Application

The 29-inch Android-based interactive LCD advertising display presents an exceptional opportunity to promote your product or service in retail P.O.P. or P.O.S. settings through the display of custom videos that enhance your sales and provide an improved shopping experience for your customers. This technology is widely utilized in a variety of commercial and public in-store environments, including retail stores, restaurants, banks, supermarkets, airports, and hospitals.

## Specification

### 29 inch Android Based Enclosed Video Screen



#### Description

- Model No.: SAD2901KL.
- Built-in rooted Android or HDMI out.
- Touch screen/Internal 4G is optional.
- Horizontal or vertical installation.
- Support split screen, and multimedia display.
- Support WiFi and Ethernet by factory default.

### Product Technical Specification

<b>Model</b>	SAD2901KL	<b>Shell color</b>	Standard: black
<b>Open Frame or Enclosed</b>	Enclosed	<b>External Port</b>	Support SD/U flash disk
<b>LCD Panel</b>	29inch	<b>Input</b>	AC 100-240V
<b>Resolution</b>	1920*632	<b>Output</b>	DC 12V/3A
<b>Display Ratio</b>	240:79	<b>Power consumption (Watt)</b>	≤30W
<b>Brightness</b>	450cd/m2	<b>Standby (Watt)</b>	≤1W
<b>Contrast</b>	1000:1	<b>Material</b>	SPCC material
<b>Visible Angle</b>	89/89/89/89	<b>Image Format</b>	JPEG/BMP/GIF/PNG
<b>Response Time</b>	5ms	<b>Life Time (hrs)</b>	>50000 H
<b>Audio Format</b>	MP3/ WMA/WAV	<b>Video Format</b>	MPEG1/MPEG2/MP4, AV/MOV/3GP/RMVP/MKV
<b>Visible Area</b>	698.4*230mm	<b>Control Method</b>	Remote controller /USB-Mouse
<b>Outline dimension</b>	741.5*269.4*58mm	<b>Default Language</b>	English
<b>CPU</b>	RK3566-Four Core-1.8Hz	<b>Menu Language</b>	Support Chinese, English
<b>OS</b>	Android 11.0	<b>Memory (RAM)</b>	2GB
		<b>ROM NAND flash</b>	16GB
<b>Storage Temperature</b>	0℃~40℃	<b>Working Temperature</b>	-20℃~60℃
<b>Working Humidity</b>	20%-80%RH	<b>Storage Humidity</b>	10%-75%
<b>Decoded Resolution</b>	Support 1080P	<b>RTC Real-time Clock</b>	Support
<b>Product Weight (N.W.)</b>	6kg	<b>Switch Time Setting</b>	Support
<b>System Update</b>	SD card update	<b>Plug Types</b>	US, EU, AU, UK Optional
<b>Package Size</b>	A single package: 816*89*410mm	<b>Packaging</b>	3pcs/Package Package Weight: 19kg (Reference Only)
<b>External Interface</b>	DCIN/USB*2/Reboot/TF/RJ45/HDMI OUT/Earphone	<b>Speaker</b>	Optional Size: 22MM*74MM, speakers 8R 2W*2
<b>Touch Panel</b>	Support	<b>External Port</b>	Support TF/U flash disk

<b>Accessories</b>	User Guide, Instruction Book, Warranty, Desiccant	<b>Optional</b>	1. 4G module 2.Touch screen
--------------------	---	-----------------	--------------------------------

**Accessories:** instruction manual, warranty card, desiccant, certificate, power adapter;

**Notes:** Some of the above specifications are optional for reference only. Please select the relevant function parameters according to your need and confirm the parameters with our sales team. The final interpretation right belongs to Shenzhen Kerchan Technology Co., Ltd. A corresponding fee will be charged according to the optional function, so please confirm with us.

## Instructions and After-Sales Service

### Instructions

1. The working voltage: 100V 240V ~ 50/60Hz AC, please do not exceed the working voltage range.
2. Please place gently and do not stress when shipping and storing.

### Warranty and After-Sales Service

1. Please read carefully the product specifications firstly .
2. Before using, please confirm the product not been damaged in the transport, if damaged, it cannot be installed.
3. The power supply in the package is only used for this product; Do not use other power source.
4. When the product is faulty, please entrust the professional person to carry out inspection and maintenance to ensure the safety. Do not disassemble by yourself to avoid unnecessary damage.
5. To prevent to be suffocated to death, package materials should be stay away from children.
6. To prevent to be swallowed by children, please take care of the small components.
7. Do not cover anything on the product.
8. Products should be away from the strong magnetic field interference and high temperature objects.